



GHT GROUP HI TECH
PRODUCTS & SERVICES
A division of



Inspector Multi-mission USV



Flight Training Device – A320



“Why GHT Group Hi Tech?”

Market Landscape:

- Japanese bred technologies are globally renowned for being ahead of the curve as evidenced by their established market presence across multiple sectors.
- Notable sectors include manufacturing machinery tools, audio-visual equipment, personal electronic devices, automobiles, and high precision instruments.
- However, Japanese technology is not immune to the pace of global innovation.
- Advancements in European and global technologies both are playing a greater role.
- Such innovations enable European advanced technological products to address the needs of the “target rich” Japanese market including the exporters segment.

Who we are:

- GHT is a division of PMC, a strategic consultancy, with an established track record in Japan representing, and supporting the growth of foreign corporate clients across a variety of sectors for over 40 years.
- PMC recognized an opportunity to increase the share of European advanced technological products and systems to address underserved demand in the Japanese marketplace.
- To achieve this objective, PMC identified and set-up GHT as a fully integrated division situated at the PMC building located near the Tokyo tower in central Tokyo.

What we do / Our services:

- GHT serves to establish a footprint and expand the presence in Japan for a broad scale of corporate clients ranging from 5 to 500 employees (i.e., “SMEs”, “ISEs”).
- Along lines of a strategic business plan together with a detailed budget, GHT, as the representative office acting on behalf of its foreign clients, is dedicated to establishing and building market presence in Japan.
- Further, GHT can provide a ‘one-stop’ solution for administrative and marketing services including the set-up of a fully staffed Japan branch, or local company, negotiate licensing agreements, and/or identify and evaluate potential acquisition and/or joint venture opportunities in the marketplace.



ROVING BAT

ROVING BAT is a powerful hybrid ROV/Crawler for the inspection and cleaning of ship's hulls (FPSO units & vessels), immersed structures & hydraulic dams, even in severe conditions.



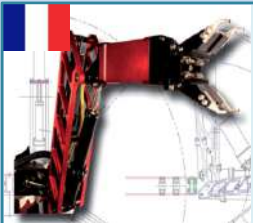
Alistar 3000

Autonomous Underwater Vehicle with an operating depth of 3000m, primarily dedicated to deep offshore operations such as pipe inspection, pipe T.D.P. monitoring & other survey & inspection tasks possible through the vehicle's hovering & manoeuvring capabilities.



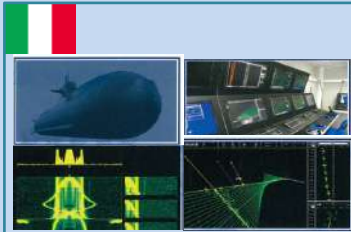
K-Ster

K-STER is a low cost and easy to launch mine killer for clearing minefields. It is designed to operate from any non dedicated platform, at short or long range, in shallow or deep water. Automatically guided towards the target, K-STER tiltable head allows a stable identification prior to accurate and powerful fire.



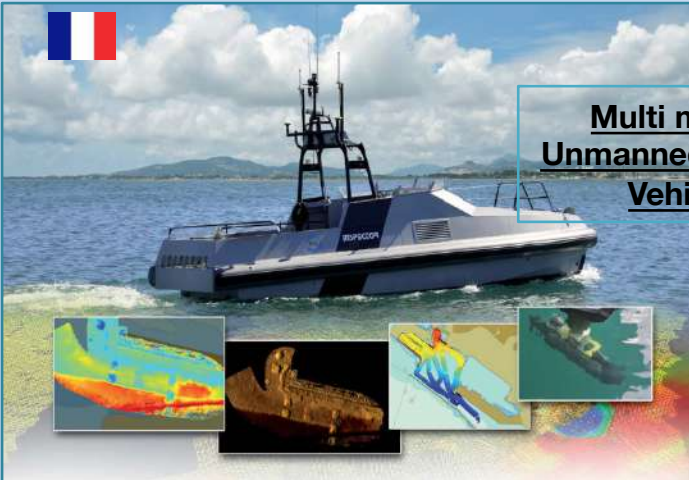
ARM 5E

The ONLY 5 function ELECTRIC Manipulator Arm existing worldwide can be integrated on any Remote Controlled Subsea Vehicle. Main missions for Offshore & Military applications: underwater intervention, underwater manipulation



STT Submarine Team Trainer

Advanced Underwater Platforms Tactical Simulator. ECA Sindel's STT solution has been designed in order to combine the functions of Command and Diving trainer into a unique, flexible, modular system, able to fulfill Modern Navies' requirements for an integrated tactical and platform-handling submarine simulator



Multi mission Unmanned Surface Vehicle

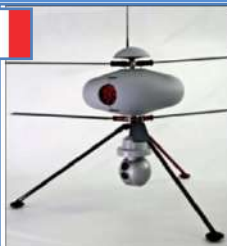


Inspector Multi-mission USV MIO / Subsea inspection / Fire-fighting

- Remote controlled unmanned platform surface vehicle.
- High level of availability and operational effectiveness
- Crew-safe operations
- Multi task and reconfiguration capabilities, task force integration
- Low draught for very shallow water (VSW) operations
- High sea state survivability for offshore constraints



Air products range



Engine	46 cm3	DC Brushless
Rotor Diameter	1,80 m	
Max T/O weight	19 kg	24 kg
Payload	5 kg	3 kg
Speed	90 Km/h	
Maximum ceiling	3000 m	
Endurance (up to)	120 mn	60 mn
Range	10 Km	

IT 180-5 TH	IT 180-3 ELE
Engine	DC Brushless
Rotor Diameter	1,80 m
Max T/O weight	24 kg
Payload	3 kg
Speed	90 Km/h
Maximum ceiling	3000 m
Endurance (up to)	60 mn
Range	10 Km

Infotron IT-180 : Vertical Take Off & Landing Unmanned Aerial System



TST B737NG

TST (Touch Screen Trainer)

The **TST** is a flexible training tool allowing to run a full aircraft simulation on low cost and flexible Touch Screen Hardware. The TST can handle more than 50% of required simulator time for a certified type rating (up to 66%), by doing all the ground phase for all procedure training.

This flexible trainer can host hardware replicas for MCDU, FCU, ECP, ECAM Control Panel, Switching Panel, Throttles, Side Sticks and others upon request.

It is very easy to operate, with ordinary power supply. Simple Windows® knowledge is enough for all maintenance operations. If necessary, maintenance can be performed remotely through a web connection.



A 320/A330/A340 FMGS/T

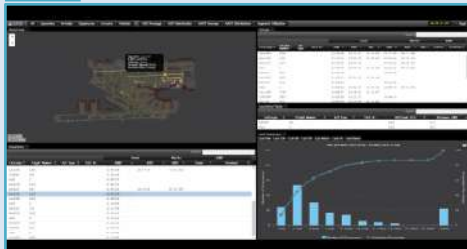


B 717/ B737/ B747/ B757/B767 /B777 FMS/T

FMS/T (Flight Management System Trainer)

Bridges the gap between full-flight simulator training and classroom instruction! ECA FAROS' wide range of FMSTs provide a one-stop shop for fleet training challenges. Flexible configurations (2D or 3D) allow training organizations and airlines to select the device best suited to each training need. They provide a low cost and pressure free environment, fulfilling a wide range of training requirements. These high-fidelity trainers are the right tools to understand system philosophy, mechanization, skills to train flight crews and ground technicians.

A320/A330/A340/A350 FMGS/T (IPAD)
B737NG FMS/T (IPAD)



SAGA (Surface Awareness and Guidance at Airport)

Basic concept of SAGA is a turnkey solution for airport surface management that provides real-time visibility over airport surface, terminal area movements (similar as A-SMGC) and all aircraft in 10NM and 50NM from the airport. Its flexibility allows it to be integrated with existing legacy sensors and/or with ALTYS ecosystem.

Thanks to ALTYS's years of experience in data mining, SAGA will provide advance statistics and understandable reports to users. SAGA is a sophisticated tool which gives support to Air traffic control, Airport Management and Airlines people.



FTD (Flight Training Device)



FTD A320



CAMELEON EOD

Light weight EOD UGV



Compact Lightweight Modular EOD Robot

- EOD/IEDD detection & neutralization
- Bomb disposal
- Render safe
- CBRNe detection
- Dangerous duty operations

CAMELEON CBRNe

CBRNe Detection & Analysis



Detection, Sampling & Investigation

- Protection for first response teams
- Multiple chemical, radiological & explosive sensors
- Measures explosion risk
- Dose rate measurement while keeping operators safe.

COBRA MK2 - UGV

Tactical First Response Multi-Mission Mini



for urban warfare & homeland security

- Improvised Explosive Device (IED) Neutralization
- Intelligence, Surveillance, Reconnaissance (ISR)
- Chemical / Radiological Detection,
- Increase Situational Awareness,
- Indoor & Outdoor Operations

Military Vehicle Simulator

- Teach dangerous situations & vehicle handling without risks (collision, rollover, ambush)
- Geospecific visual database with wide range of training zones (base camp, desert, city, test track)
- Multiple simulators connected together for multi-crew interaction
- A single instructor to manage several crews
- Track progress of every trainee through its dedicated account



REF 95002 Riot and personal protection shield
Light and strong shield from SAPL which can protect from a range of projectile from Molotov cocktail to TOKAREV automatic pistol

NON LETHAL



DBD95 Personal rubber break-out grenade (Non lethal)

When it's no longer possible to maintain order, the hand grenade allows the Force of Law to destabilise troublemakers and gain the few seconds required to decide whether to break-out or make arrests

Kinetic energy of each projectile 80J
Sound level 165dB



Colour decoding system for VS 340 N Black&White TV camera
Hard Radiation tolerant Colour TV camera



Through-wall panoramic TV camera for hot cells



VSE 506

High pressure sodium (HPS) light for applications in air and in water
Power 1000W
Bulb life time 24,000h



TV Camera for operations in vacuum and ultra high-vacuum environments



Breeders fuel removal system

Working arms equipped with working tools and bi unit nuclear cameras dedicated to the recovery of spent nuclear fuel from the reactor vessel.
Intervention site :
Dounreay – Scotland
Realization : ECA/AREVA NP



Network TV camera with zoom and swivelling head for nuclear applications in air or in water

BUILT IN IP SERVER
- NIGHT AND DAY
- 18x OPTICAL ZOOM



DTR 65 HRC

Compact Swivelling head colour TV camera for applications in air and water- H360°
- OD65mm -L150mm - Internal lights following movements of camera head
-50 000 hours life time.



CBRN LightWeight Decontamination and Protective Overall - CLD 500MODEL (Fully encapsulated suit)

CBRN lightweight ventilated decontamination overall. CBRN filtering overall with built-in blowing device directly fitted to the CLD 500. This system increases the wearing time as well as the protection level by a light overpressure inside the protective overall. Built-in socks. Could be used by citizens wanting to protect themselves from radioactive dust and cloud.



Complete S.W.A.T./CBRN equipment

- 1 CBRN/F overall
- 1 tactical jacket
- 1 breathing support system
- 2 CBRN filtering canisters
- 1 CBRN gas mask
- 2 pairs of CBRN/F GNG gloves
- 2 pairs of CBRN socks
- 1 transport bag

Japanese Products



LIGHT
Optical Works, Ltd.

Light Optical Works, Ltd.



Light Rifle Scope

High precision acknowledged by top shooters all over the world.

In hunting, contests, and other long-range shooting activities, the shooter has to make bullets repeatedly hit a target 1,000 yards away within accuracy of 15 cm. That demands a high-performance and rugged rifle scope.

Optical design and lens manufacturing technology that realize the high resolution that will sharply reflect a distant target. Structure that withstands the strong shock exerted at the moment of firing. Mechanism design that enables adjustment of focus, parallax, etc., for high accuracy.

Having built up such technology as unique expertise for over half a century, and furthermore by flexibly incorporating the latest technologies, Light Optical Works, Ltd. is able to manufacture products that others cannot imitate.



Grow Chemical fire proof agent

Combustion Test *This experiment was performed at the Ishikawa Prefecture Federation of Forestry Association



Right side : Regular lumber
Left side : GP Fire Proof treated lumber



The house on the right has caught fire. The house on the left shows some carbonization but the flames have not ignited.



The flames have spread all over the roof and the eaves for the house on the right. The house on the left has not caught fire.



Group Hi Tech

The high tech, innovative,
European companies
representative in Japan

Fields of interest :

Aeronautics
New Energies
Security
Defence
Advanced Robotics

GHT Group Hi Tech

PMC Bldg, 1-23-5
Higashi-Azabu, Minato-
ku, Tokyo 106-0044
JAPAN
tel. 03-3585-2262
fax 03-3585-1134
ght@pmcJapan.com



PMC Building, where
GHT Division is
located, near Tokyo
Tower